

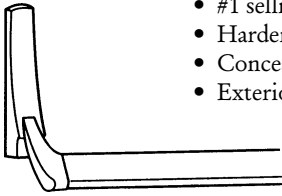
**CONCEALED VERTICAL ROD DEVICE
PARTS DIAGRAM**

DOR-O-MATIC

.....**CONCEALED VERTICAL ROD EXIT DEVICE**.....

1990EO

- For 3'8" x 7' Aluminum or Hollow Metal Doors and includes strike
- Not recommended for wood doors
- #1 selling exit device for aluminum doors
- Hardened steel latches
- Concealed mounting screws
- Exterior cylinder dogging
- Hex bottom latch furnished standard
- ANSI Grade 1
- Compatible with stiles as narrow as 1 3/4"
- Field adjustable width
- U.L. Listed 305

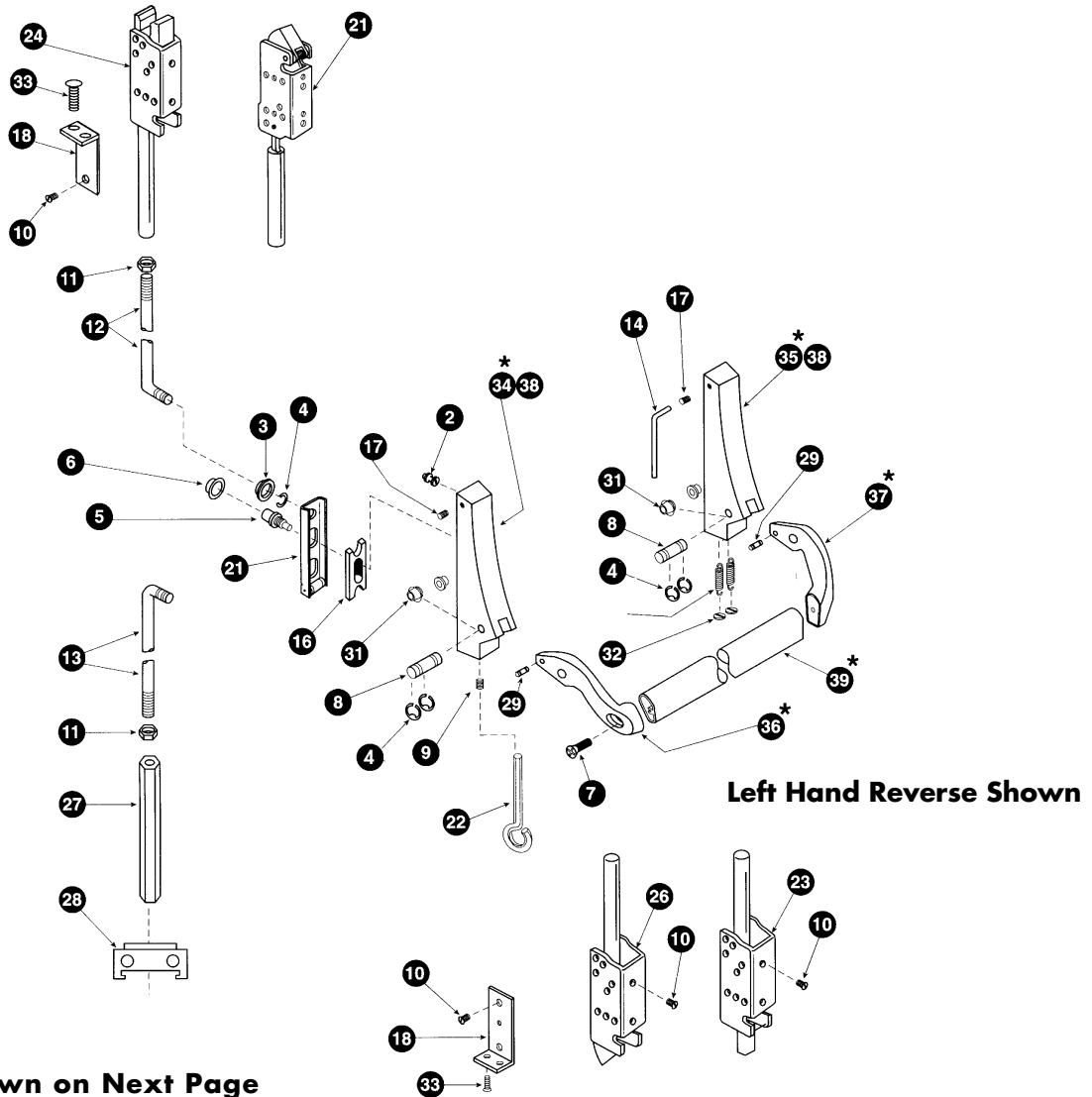


Catalog #

Finish

1990EO P13	Painted Aluminum - Dark Bronze
1990EO P28	Painted Aluminum - Silver

.....**1990 PARTS DIAGRAM**.....



Parts Breakdown on Next Page

Smallwood Lock Supply

1830 Minnesota Avenue • Kansas City, KS 66102

Local

www.smallwoodlock.com

Toll-Free

913-371-5787
Fax: 913-371-3201

DOR 1

888-881-4245
Fax: 888-881-4248



..... 1990 PARTS DIAGRAM DESCRIPTION

Number	Model Number	Description	Part Number	Finish	Package Quantity
2	PB2	Case Mounting Stud	STUD.101	-	10
3	PB3	Bearing Bushing	BUSH.109	-	10
4	PB4	Retaining Ring .250	RRING.109	-	25
5	PB5	Pinion Cam	CAM.102	-	10
	PB140	Pinion Cam	4270100566	-	each
6	PB10	Cylinder Bushing	BUSH.102	-	10
7	PB12	1/4-20 1" FPHTC TYP23	SCREW.1027	Satin Stainless	10
	PB12	1/4-20 1" FPHTC TYP23	SCREW.1015	Black	10
8	PB13	990 Axle Pin	PIN.106	Satin Stainless	10
	PB13	990 Axle Pin	PIN.114	Brass	10
	PB15	1990 Axle Pin	PIN.115	-	10
9	PB14	Dog Screw	SCREW.1022	-	25
10	PB17	10-32 1/4" UFPHMS	SCREW.1028	Satin Stainless	10
	PB17	10-32 1/4" UFPHMS	SCREW.1029	Black	10
11	PB23	Rod Jam Nut	NUT.101	-	10
13	PB25	Hex Bottom Rod	4270101825	-	each
14	PB30	Allen Wrench	WRENCH.101	-	10
16	PB35	Rod Retractor	RETRACT.101	-	10
17	PB38	1/4-20 3/8" Hex Soc Set	SCREW.1030	Satin Stainless	25
	PB38	1/4-20 3/8" Hex Soc Set	SCREW.1039	Black	25
18	PB54	Latch Mtg Bracket Kit-HMD	BRKTASY.101	Satin Stainless	each
	PB54	Latch Mtg Bracket Kit-HMD	BRKTASY.103	Black Painted Aluminum	each
21	PB88	Lift Bracket Assembly	4270100013	-	each
22	PB99	Hex Dogging Key	KEY.101	-	10
23	PB129	RL Bottom Latch	4270100521	-	each
24	PB130	SU Top Latch	4270101806	-	each
25	PB131	ES Top Latch	4270101346	-	each
26	PB132	PL Bottom Latch	4270101482	-	each
		<i>PB129-PB132 - Specify if door material is other than aluminum. Complete rod and latch assembly includes PB24 standard rod and PB23 nut • Part numbers shown are for standard center lines and assembled lengths</i>			
27	PB133	Hex Bottom Key	4270101830	-	each
28	PB134	Hex Rod Guide Assembly	4270107176	Satin Stainless	each
	PB134	Hex Rod Guide Assembly	4270107178	Black Painted Aluminum	each
	RD9	Old Style Tension Spring	SPRING.102	-	10
		<i>Not shown in parts diagram. For device shipped before May 1977</i>			
29	RD10	Spring Pin	PIN.104	-	10
30	SD9	Tension Spring	SPRING.103	-	10
31	SD43	Axle Bushing	BUSH.103	-	25
32	SD45	Spring Retainer	RETAIN.102	-	25
33	SR33	10-32 3/8" FPHMS	SCREW.1037	-	each
	RA1	SU Top Rod Assembly 7' Door	4270106632	-	each
	RA2	SU Top Rod Assembly 8' Door	4270106633	-	each
	RA3	SU Top Rod Assembly 9' Door	4270101818	-	each
	RA4	SU Top Rod Assembly 10' Door	4270101819	-	each
	RA5	ES Top Rod Assembly 7' Door	4270101873	-	each
	RA6	RL Bottom Rod Assembly	4270100522	-	each
	RA7	Hex Bottom Rod Assembly	4270101831	-	each
	RA8	PL Bottom Rod Assembly	4270106632	-	each

RA1-RA6 and RA8 - Specify if door material is other than aluminum. Complete rod and latch assembly includes PB24 standard rod and PB23 nut

Smallwood Lock Supply

1830 Minnesota Avenue • Kansas City, KS 66102

Local

www.smallwoodlock.com

Toll-Free

913-371-5787

Fax: 913-371-3201

DOR 2

888-881-4245

Fax: 888-881-4248



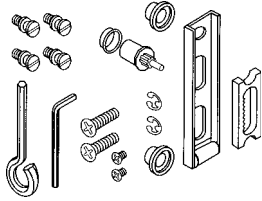
**1990 AUXILIARY PACKAGE
RIM CROSSBAR EXIT DEVICE
PARTS DIAGRAM**

DOR-O-MATIC

CROSSBAR DEVICES

PBX-2

• 1990 Auxiliary Package

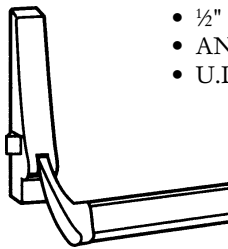


Catalog #	Finish	Part Number
PBX-2	Satin Stainless	4270902901

RIM CROSSBAR EXIT DEVICE

2090EO

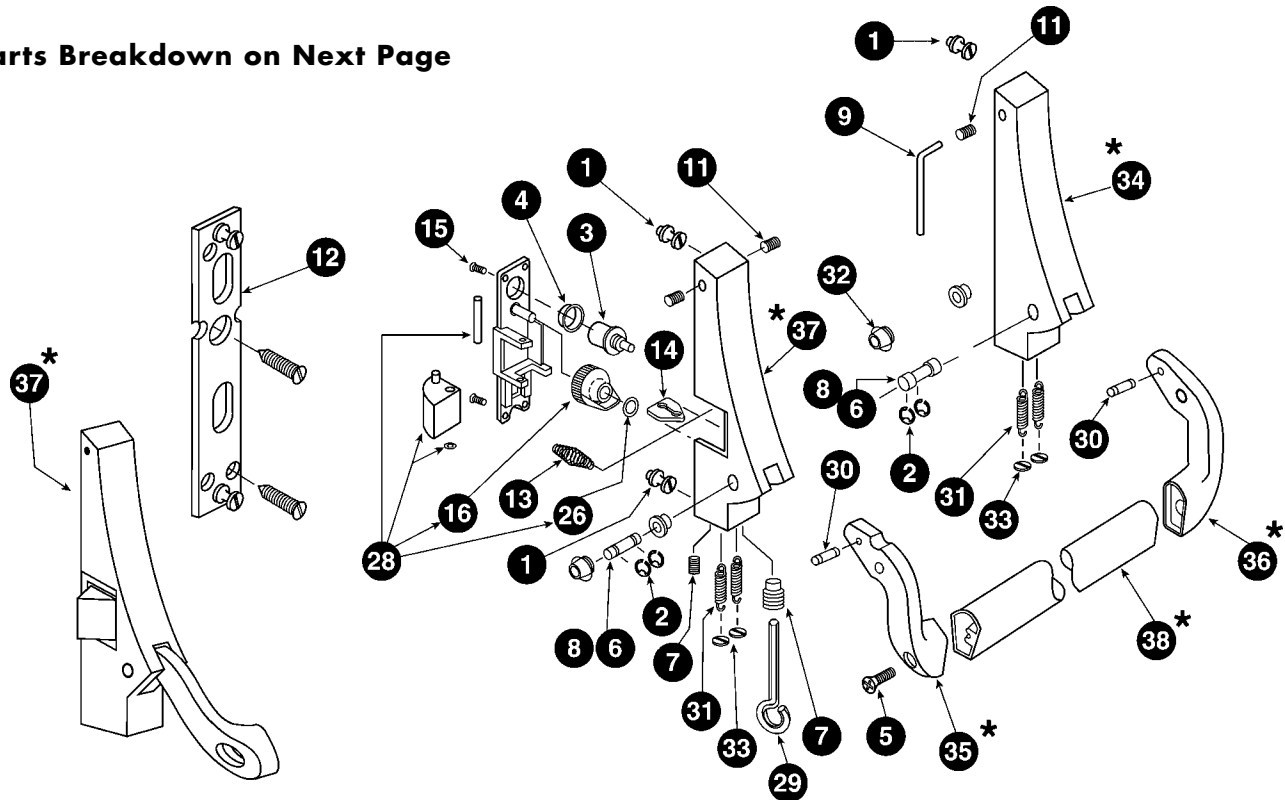
- For 3'8" Aluminum or Hollow Metal Doors and includes strike
- Not recommended for wood doors
- ½" throw steel latchbolt
- ANSI grade 1 device
- U.L. Listed 305
- Dependable performance and economical pricing
- Can be mounted on stiles as narrow as 1¼"
- Surface mounted strikes for full frame or blade type stops



Catalog #	Handed	Finish
2090EO P13 LHR	Left Handed	Painted Aluminum - Dark Bronze
2090EO P13 RHR	Right Handed	Painted Aluminum - Dark Bronze
2090EO P28 LHR	Left Handed	Painted Aluminum - Silver
2090EO P28 RHR	Right Handed	Painted Aluminum - Silver

2090 PARTS DIAGRAM

Parts Breakdown on Next Page



Smallwood Lock Supply

1830 Minnesota Avenue • Kansas City, KS 66102

Local

www.smallwoodlock.com

Toll-Free

913-371-5787
Fax: 913-371-3201

DOR 3

888-881-4245
Fax: 888-881-4248



2090 PARTS DIAGRAM DESCRIPTION

Number	Model Number	Description	Part Number	Finish	Package Quantity
1	PB2	Case Mounting Stud	STUD.101	-	10
2	PB53	Retaining Ring .250	RRING.103	-	10
3	PB5	Pinion Cam	CAM.102	-	10
	PB140	Pinion Cam	4270100566	-	each
4	PB10	Cylinder Bushing	BUSH.102	-	10
5	PB12	1/4-20 1" FPHTC TYP23	SCREW.1027	Satin Stainless	10
	PB12	1/4-20 1" FPHTC TYP23	SCREW.1015	Black	10
6	PB13	1090 Axle Pin	PIN.106	Stainless Steel	10
	PB13	1090 Axle Pin	PIN.114	Brass	10
	PB15	2090 Axle Pin	PIN.115	Satin Stainless	10
7	PB14	Dog Screw	SCREW.1022	-	25
9	PB30	Allen Wrench	WRENCH.101	-	10
11	PB38	1/4-20 3/8" Hex Soc Set Screw	SCREW.1030	Satin Stainless	25
	PB38	1/4-20 3/8" Hex Soc Set Screw	SCREW.1039	Black	25
12	PB42	Assembly Plate Assembly	4270100304	-	2
13	PB61	Latch Spring	SPRING.104	-	10
14	PB62	Latch Link	4270101840	-	each
15	PB63	4-40 3/8" FL Posi-Drive Screw	SCREW.1031	-	10
16	PB64	Latchbolt Retractor	RETRACT.102	-	10
26	PB81	Retaining Ring .240	RRING.102	-	10
28	PB89	2090 Backplate Assembly LHR	4270902968	-	each
	PB89	2090 Backplate Assembly RHR	4270902974	-	each
29	PB99	Hex Dogging Key	KEY.101	-	10
30	RD10	Spring Pin	PIN.104	-	10
31	RD9	Old Style Tension Spring	SPRING.102	-	10
	SD9	Tension Spring	SPRING.103	-	10
32	SD43	Axle Bushing	BUSH.103	-	25
33	SD45	Spring Retainer	RETAIN.102	-	25

Not shown in parts diagram. For device shipped before May 1977

NOTES

Smallwood Lock Supply

1830 Minnesota Avenue • Kansas City, KS 66102

Local

www.smallwoodlock.com

Toll-Free



913-371-5787
Fax: 913-371-3201

DOR 4

888-881-4245
Fax: 888-881-4248